



### XC-301 Magnified Human Larynx Model

A functional model that demonstrates movements of the epiglottis and cartilages in the voice box. It helps the students to require and understanding of the morphology and structure of the respiratory tract and phonetic organ. Dissectible into 3 parts, 3 times enlarged. Size: 11.5x11x24CM.

Packing: 12pcs/carton, 66x28x27cm, 8kgs

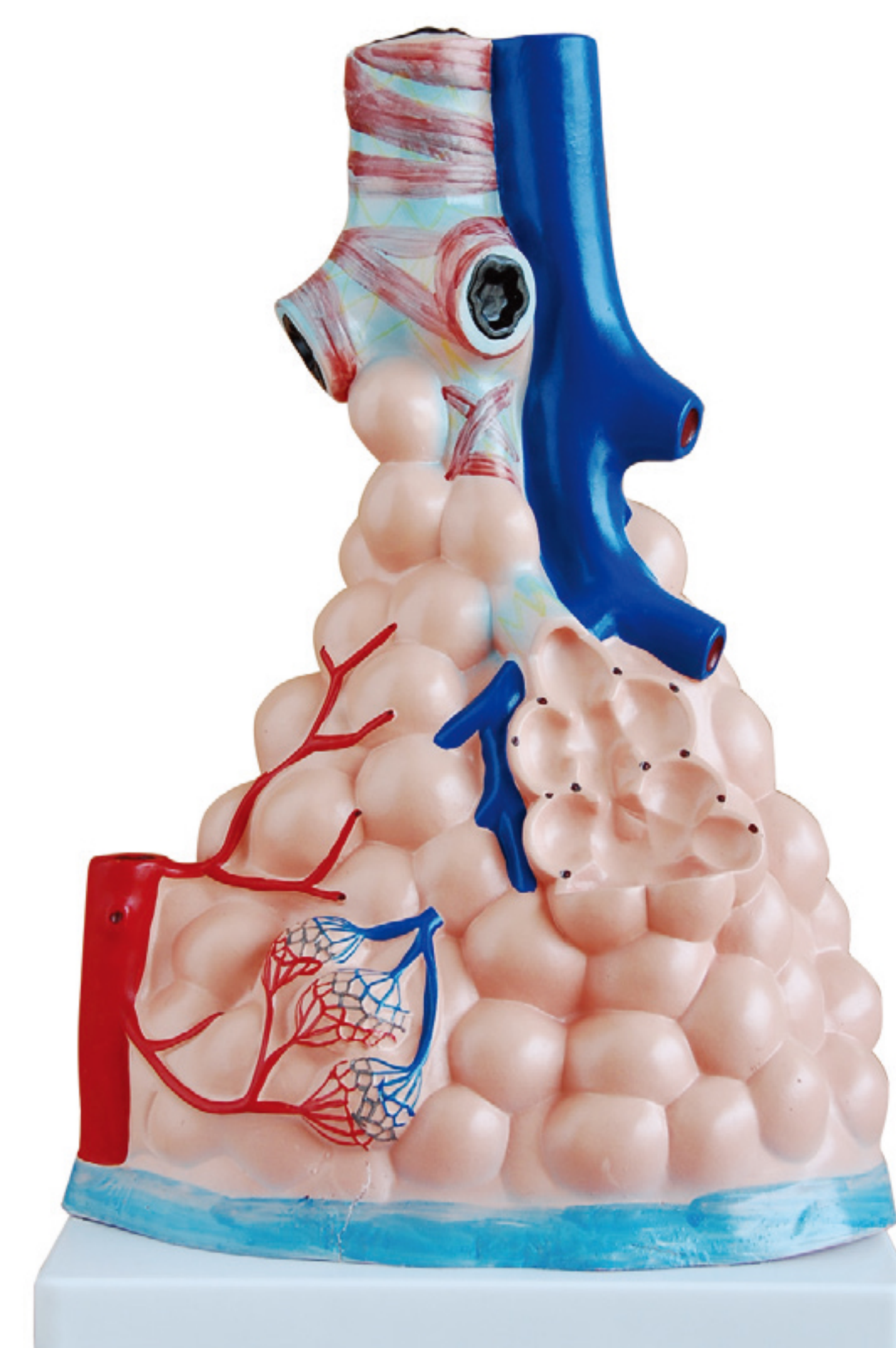
### XC-302 Magnified Pulmonary Alveoli Model

The model shows the small branches of principal bronchus:

1. Section of bronchiole of no cartilage.
2. The relation between pulmonary alveoli and terminal bronchiole.
3. The structure of alveolar sac and alveolar duct.
4. The capillary rete in the alveolar sapta.

Size: 26x15x35CM

Packing: 4pcs/carton, 81x41x29 cm, 8kgs



### XC-305 Expansion Model of Human Teeth

This model shows the morphological differences of the incisor, canine and molar teeth. Dissections of the canine and molar teeth demonstrate the structure of the enamel, dental pulp cavity. 3pcs/set. 12 times enlarged.

Packing: 10sets/carton, 82x44x33cm, 24kgs

### XC-306 Stomach Model

With the longitudinal section, the model shows the structures of the gastric folds, pyloric valve, pyloric sphincter muscles, gastric mucosa and the transitional mucosa of the gastric-esophagus. Made of hard plastic and magnified 2 times of the natural size.

Packing: 10pcs/carton, 51x47x34cm, 13kgs

