

XC-307 Jumbo Heart Model

This model shows the external features and internal structures of the heart and its relation with the large blood vessels. A clearer conception of the routes of the systemic and pulmonary circulation can be obtained. Dissectible into 3 parts, 4 times enlarged. Made of PVC plastic. Size: 25x23x23CM.

Packing: 8pcs/carton, 58x45x50cm, 16kgs

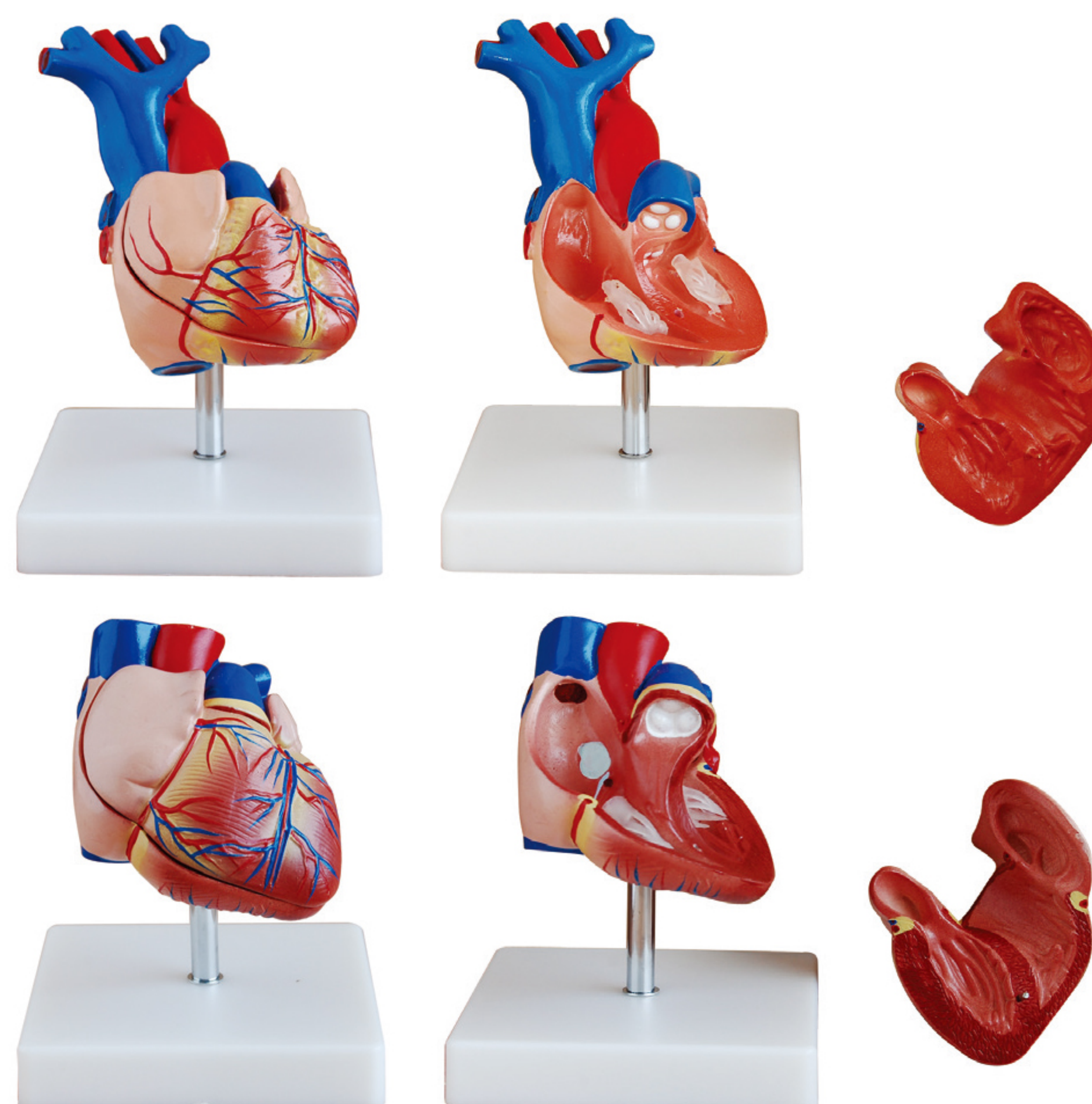
XC-307A Life-Size Heart Model

These two models show the anatomy of human heart with ventricles, atriums, valves, veins, and the aorta in great anatomical detail. The front heart wall is removable to view the chambers and internal structures. Dissectible into 2 parts.

XC-307A Packing: 50pcs/carton, 66x30x38cm, 25kgs

XC-307B Packing: 32pcs/carton, 53x30x41cm, 16kgs

XC-307B New Style Life-Size Heart Model



XC-307C New Style Jumbo Heart Model

This model shows the anatomy of human heart with aortic arch, coronal section of atrium and ventricle, valves, and veins in great anatomical detail. Dissectible into 3 parts, 4 times enlarged.

Packing: 8pcs/carton, 58x45x50cm, 17kgs

XC-307D Middle Heart Model

This model shows external features and internal structures of heart and its relation between large blood vessels. Dissectible into 5 parts, 3 times enlarged.

Packing: 8pcs/carton, 51x48x39cm, 12kgs

