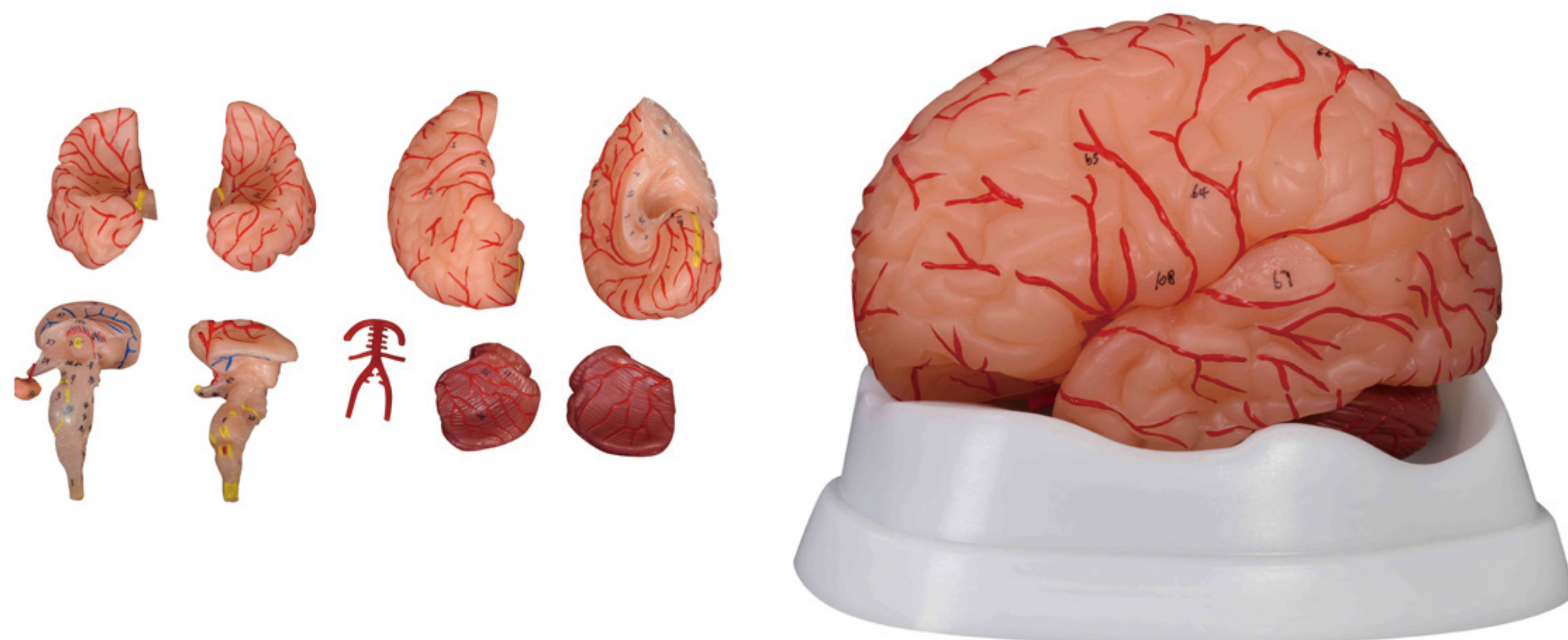


## XC-300 Anatomical Series



### XC-308D Brain with Arteries 9 Parts

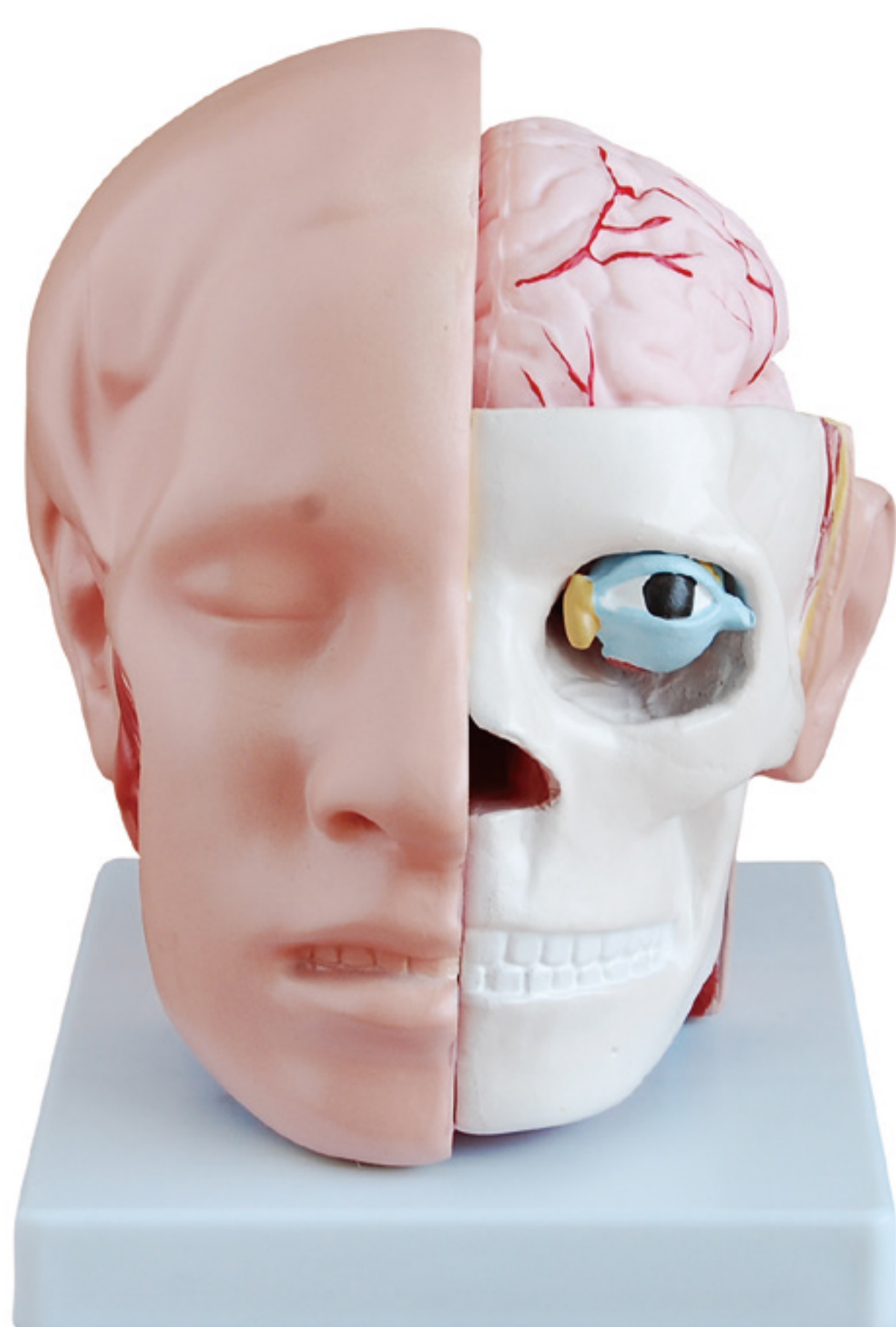
External features of the brain: cerebral hemisphere, brain stem, cerebellum. Dissectible into 9 parts, life-size with number. On stand. Size: 18.5x14x13.5CM.

Packing: 18pcs/carton, 53x39x55cm, 15kgs

### XC-318 Brain with Arteries on Head

This model shows the brain structure inside the skull. Two halves brains can be disassembled into: frontal with parietal lobes, temporal with occipital lobes, half of brain stem, half of cerebellum. Dissectible into 9 parts, life-size.

Packing: 8pcs/carton, 48x39x51cm, 14kgs



### XC-318B Head with Brain

This model shows the head structure including brain structure inside the skull. Dissectible into 10 parts, life-size.

Packing: 8pcs/carton, 53x39x47cm, 14kgs

### XC-309 Nasal Cavity

This model shows the external and internal structures of the nasal cavity. Magnified 1/2 the natural size. Made of PVC.

Packing: 20pcs/carton, 54x28x21cm, 6kgs

