

XC-300 Anatomical Series

➤ XC-310-1 Kidney Model (1 part)

The coronary section of the right kidney shows the renal hilus, renal blood vessels, ureter, renal pelvis of the kidney, the renal substance is demonstrated by its medulla and cortex, medullary pyramid, papillae etc. 2 times enlarged. Size: 20x10x4CM. On stand.

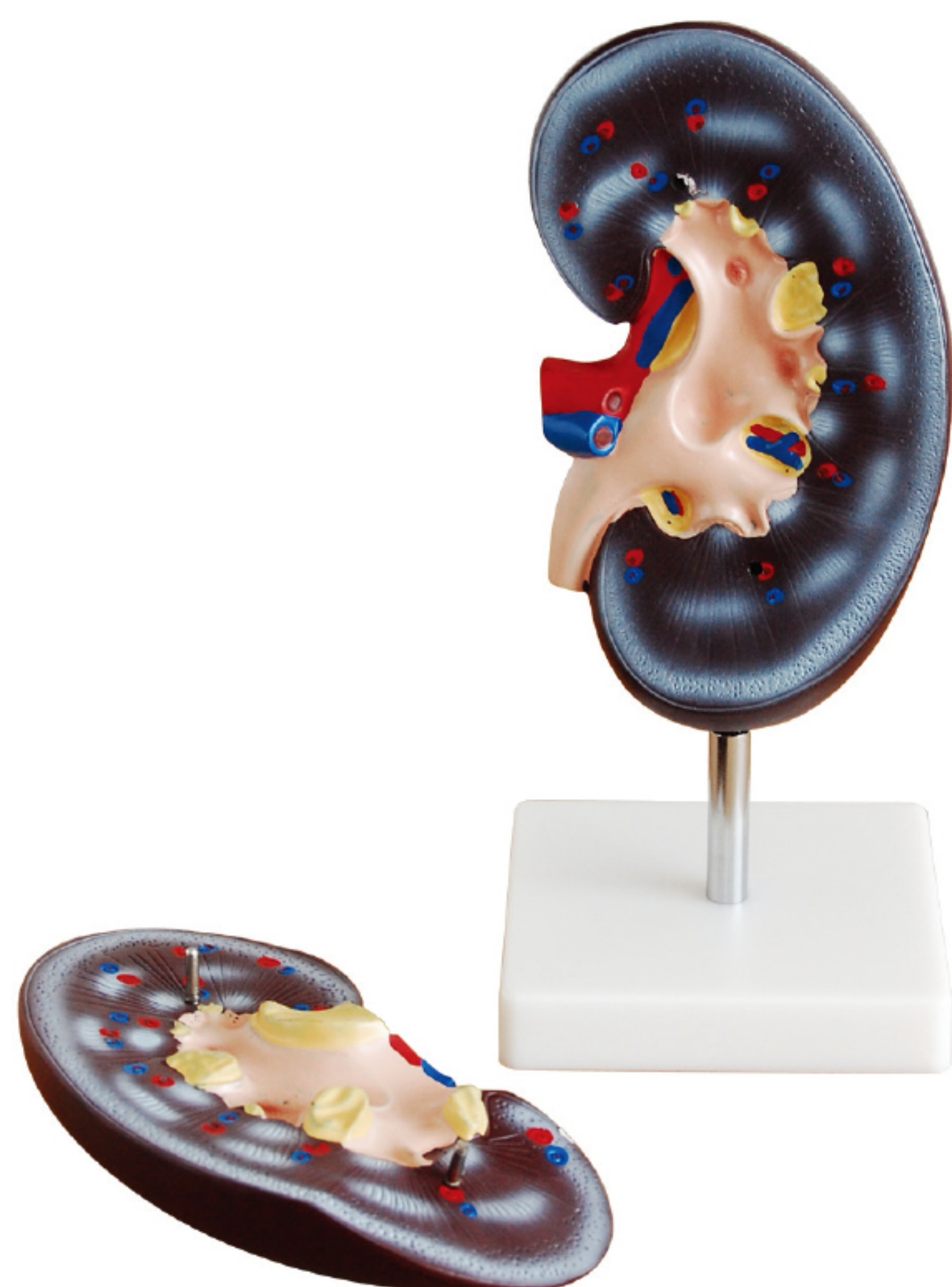
Packing: 20pcs/carton, 50x35x42cm, 11kgs



⬅ XC-310-2 Kidney Model (2 parts)

The coronary section of the right kidney shows the renal hilus, renal blood vessels, ureter, renal pelvis of the kidney, the renal substance is demonstrated by its medulla and cortex, medullary pyramid, papillae etc. 2 times enlarged. Size: 20x10x7CM. On stand.

Packing: 20pcs/carton, 50x35x42cm, 13kgs



➤ XC-310-3 Human Kidney with Adrenal Gland

This model features the kidney with adrenal gland, renal and adrenal vessels and upper portion of the ureter. Dissected into 2 parts to reveal the cortex medulla, vessels and renal pelvis. Life size.

Packing: 32pcs/carton, 62x29x29cm, 15kgs



⬅ XC-310-4 Enlarged Kidney Model

This model shows 3 times enlarged of the kidney, with adrenal glands, 2 components, showing the renal cortex, renal medulla, proximal convoluted tubule, distal convoluted tubule, medullary loop, collecting duct, and papillary duct, calyces renales minors, calyces renales majors, renal pelvis, ureter, interlobular artery, vein, renal artery, vein and renicapsule.

Packing: 9pcs/carton, 58x37x29cm, 10kgs

