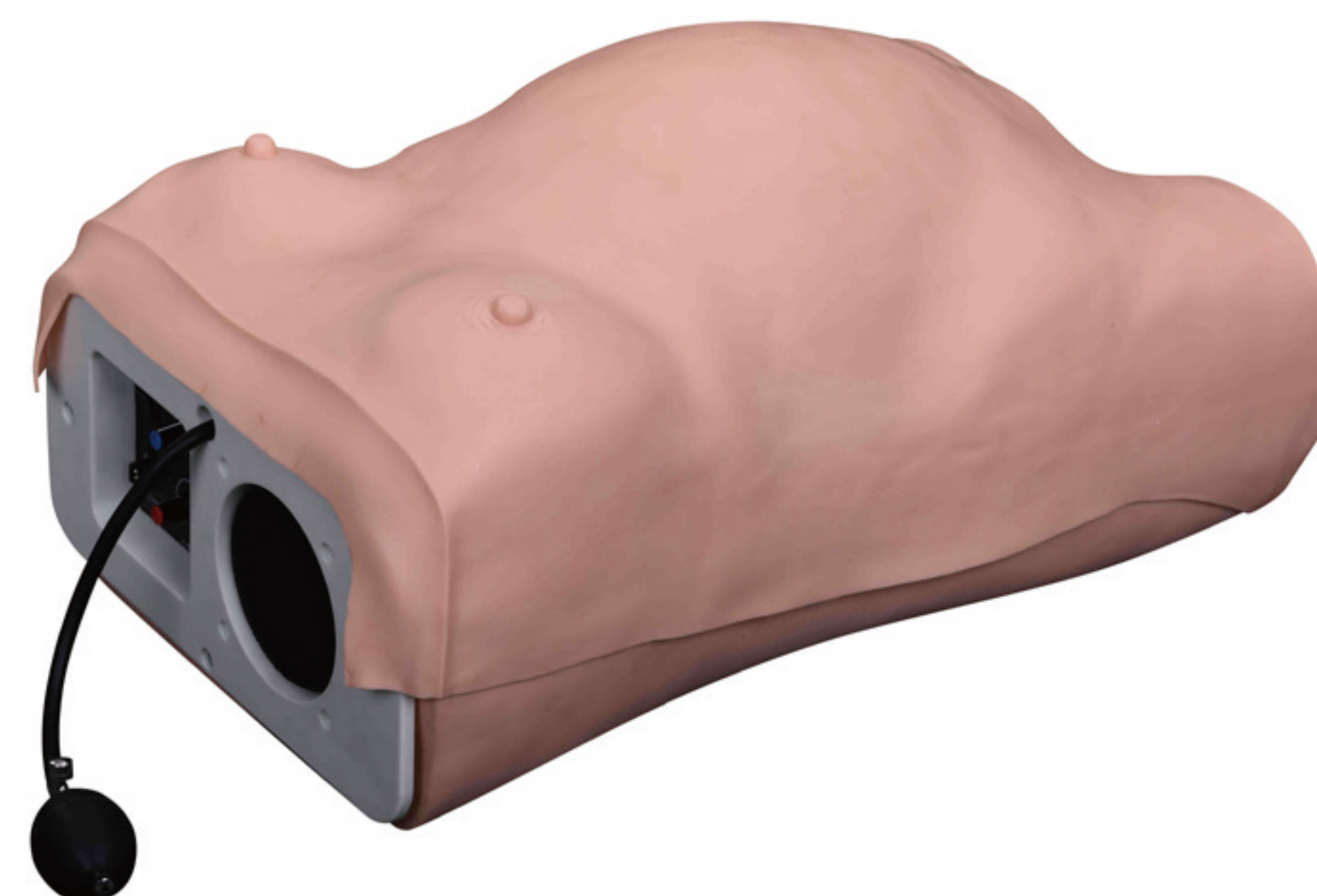


XC-400 Simulator Series

XC-412 Advanced Maternity Model

This simulator demonstrates palpation, embryo heart sound auscultation, pelvic measurement and mammary nursing training. Uterus can be inflated to lifelike through air filling. The speed of fetal heart sound and volume can be adjusted.

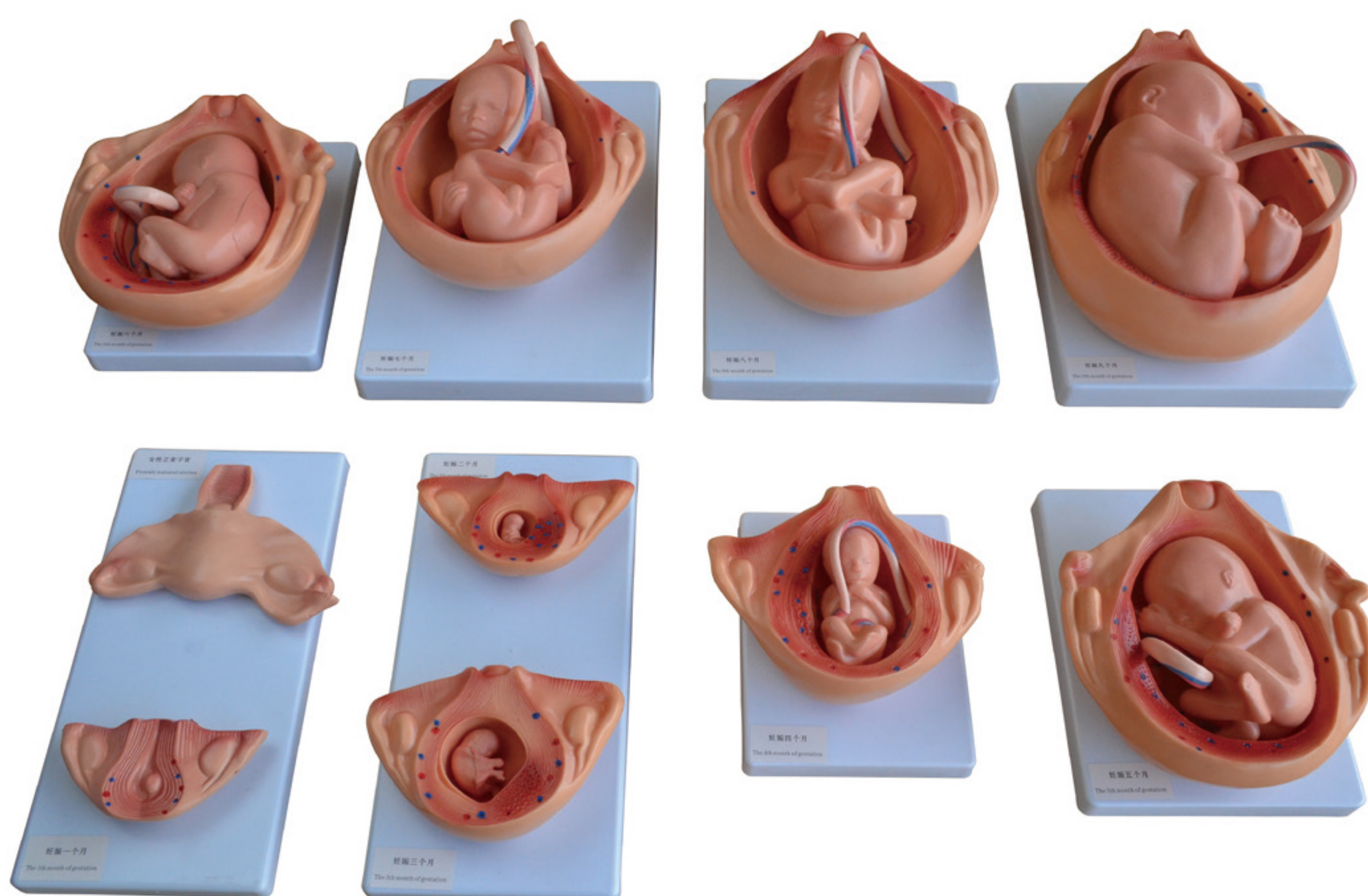
Packing: 1pcs/carton, 60x35x47cm, 15kgs



XC-414 The Development Process for Fetus

The model consists of 10 parts and show the relationship between fetus and uterus during the gestation period. Dimension: Natural size, on the base.

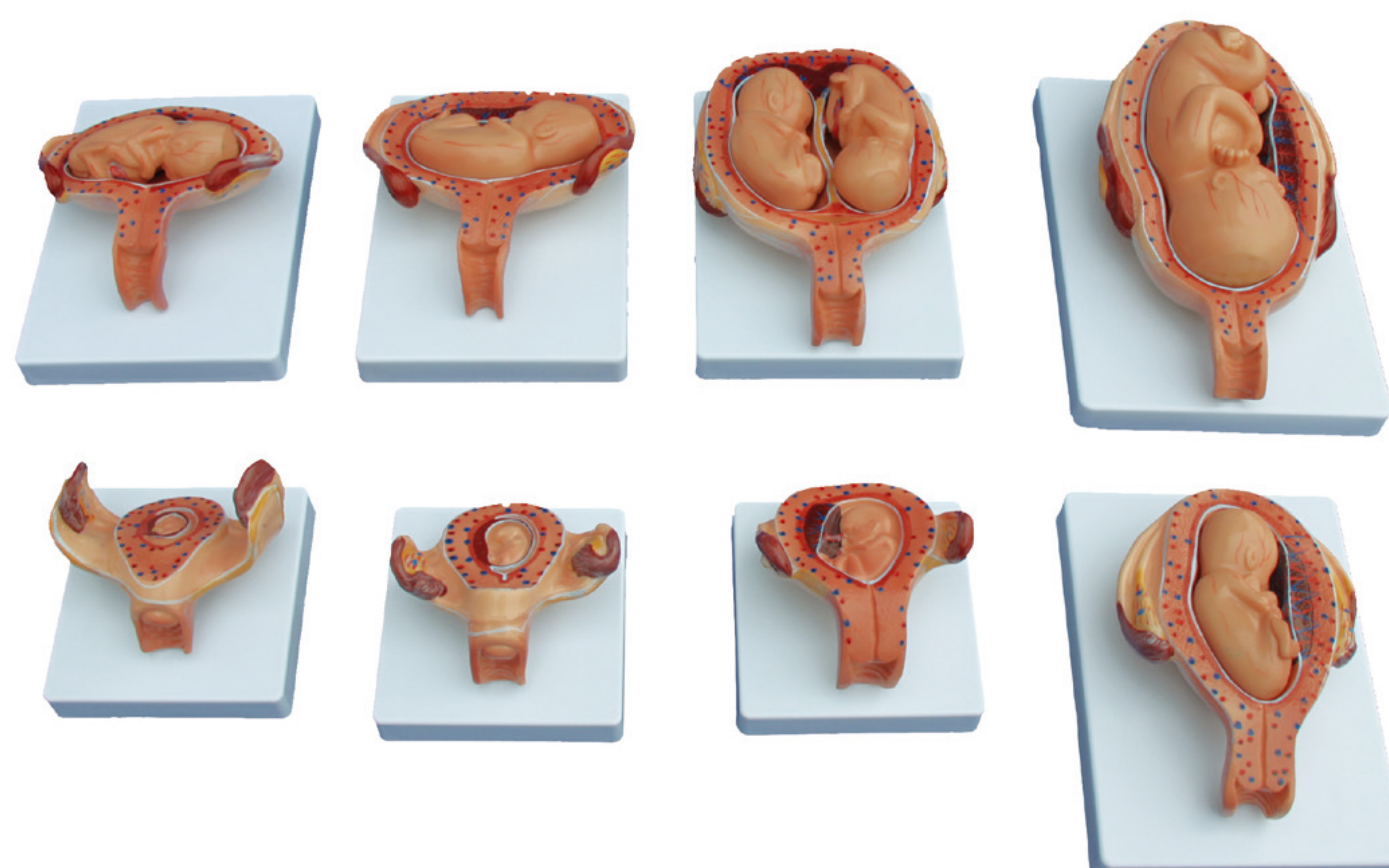
Packing: 1set/carton, 77x41x33cm, 11kgs



XC-414A The Development Process for Fetus (Half-Size)

This model shows relationship between fetus and uterus in 1st, 2nd, 3rd, 4th, 5th, 6th, 7th month pregnancy, and twins course in the 5th month. Consist of 8 parts.

Packing: 1set/carton, 54x28x21cm, 7kgs



XC-417 Contraception Guidance Model

This model shows the anatomical section of female genitals. It can be demonstrated how to put the pessary, how to put contraceptive medicine membrane or tablet, how to put in and take out the IUD and how to make induced abortion etc.

Packing: 10pcs/carton, 74x43x29cm, 12kgs

